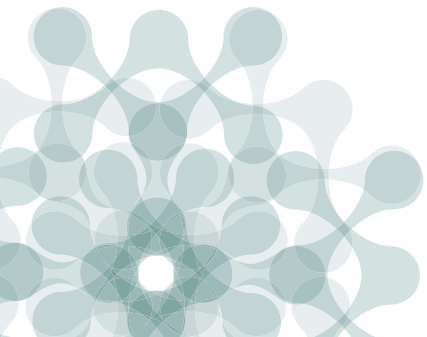
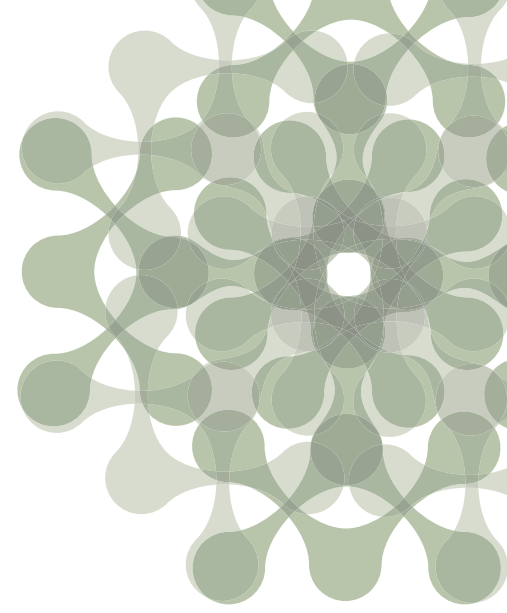


Gather
PARK TOWNSHIP



Community Center Visioning

Community Outreach Presentation (DRAFT)
Community Center Building Committee
May 21, 2024



VISION STATEMENT

Our Community Center ...

A vibrant, welcoming place where people of all ages come together gather to connect, grow, relax, and play. A spacious and adaptable destination to serve our community, inspire purpose, and enrich lives.

3 GUIDING PRINCIPLES

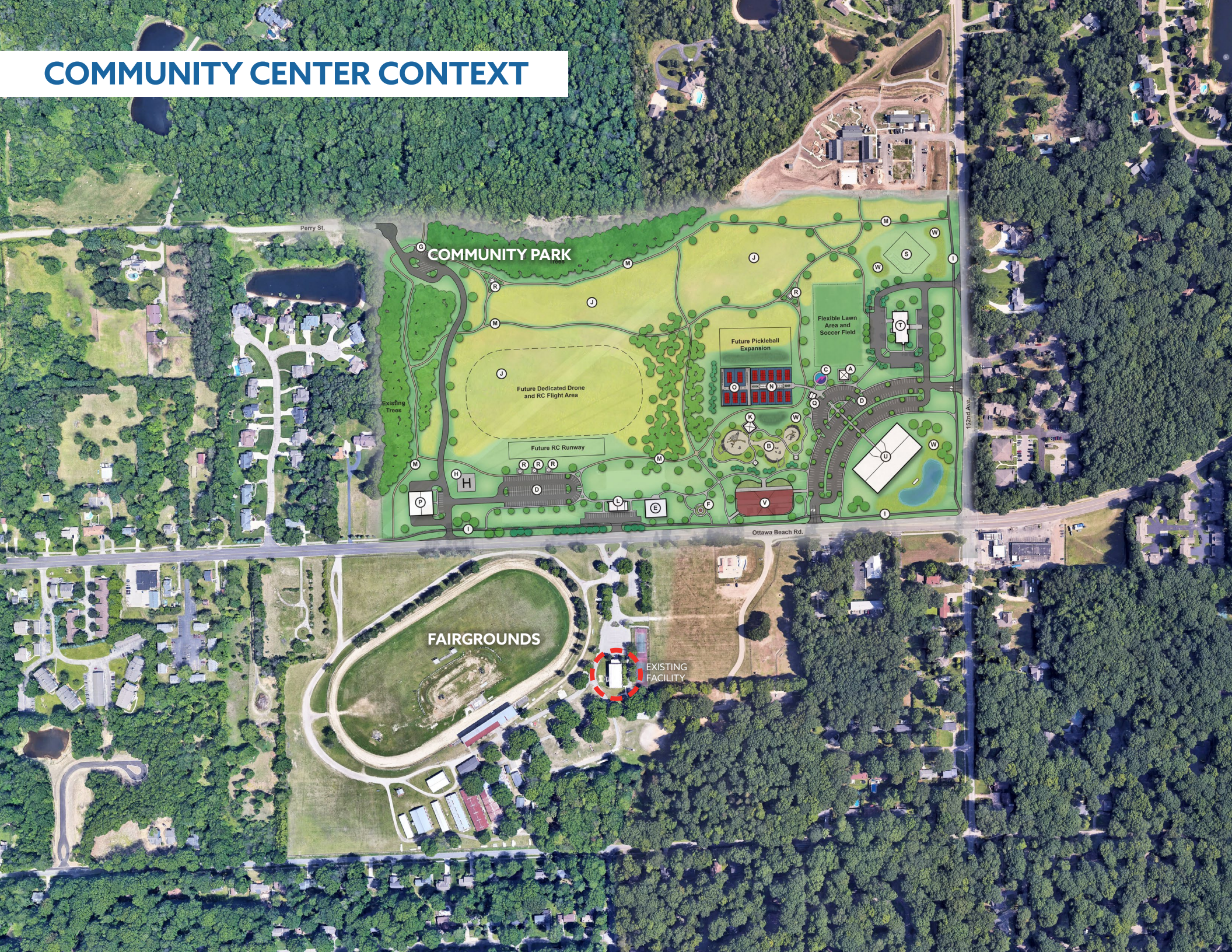
Foster Community Connection & Connectivity

Reflect and Celebrate the Park Township Community

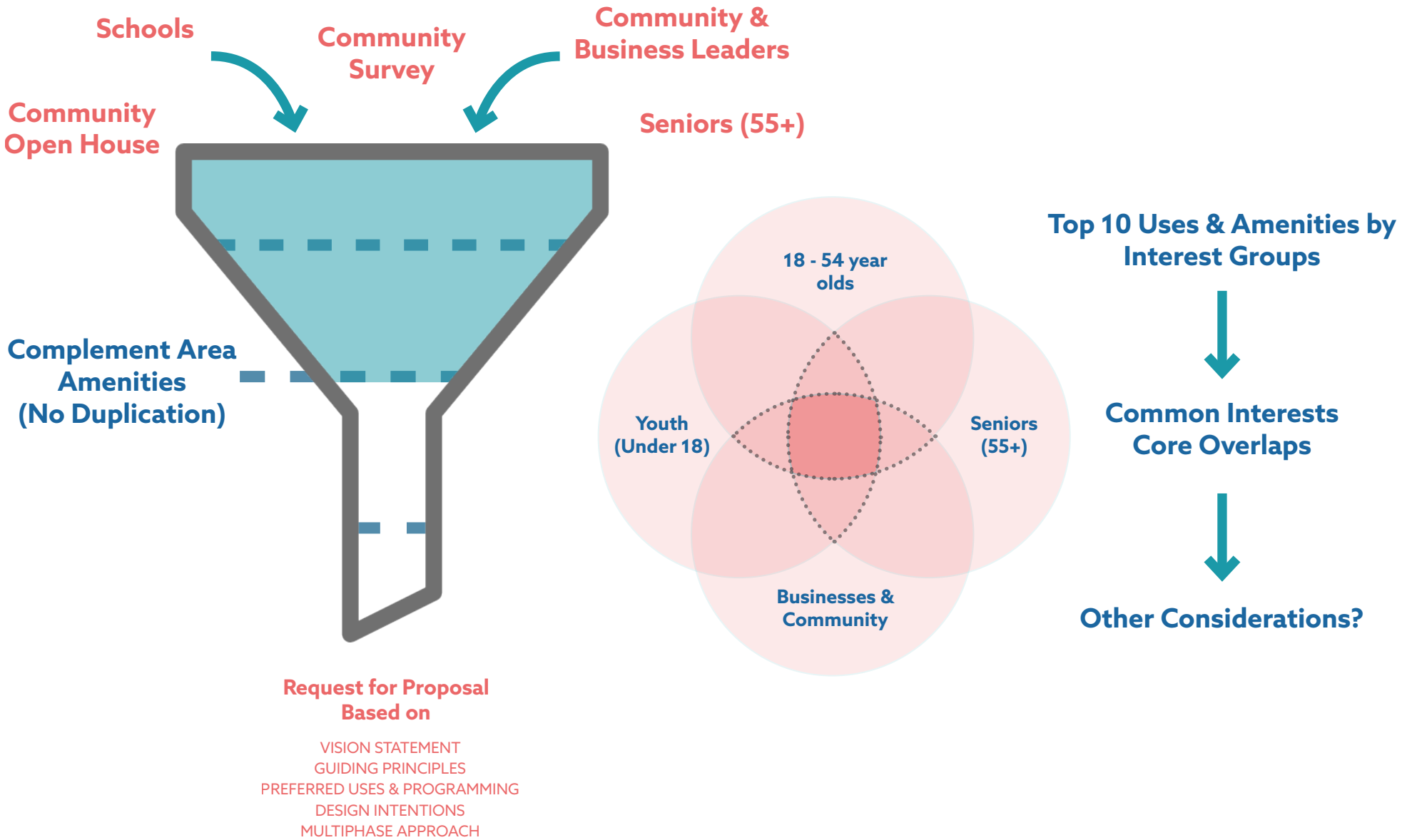
Be a Responsible Community & Neighborly Steward

(DRAFT)

COMMUNITY CENTER CONTEXT



COMMUNITY FEEDBACK SYNTHESIS



WHO WE HEARD FROM...

12 ORGANIZATIONS & BUSINESSES



100+ ATTENDEES



Community Open House

200+ YOUTH UNDER 18



82 18 - 54 yo ADULTS



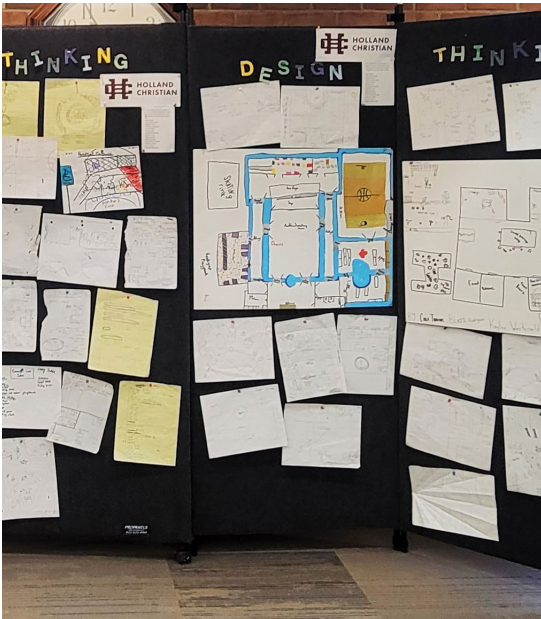
140 55+ yo ADULTS



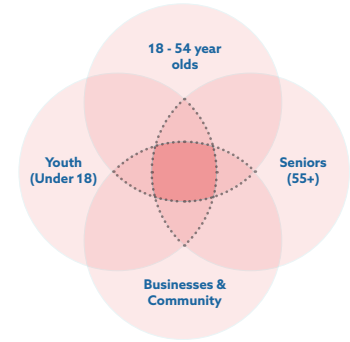
40 Focus Group Attendees



100 Survey Responses



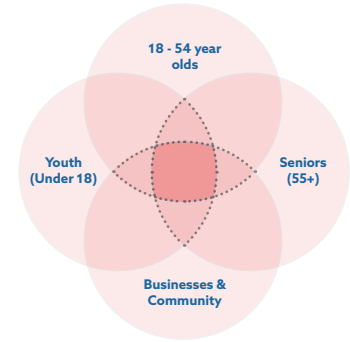
QNS: WHAT WOULD YOU LIKE TO SEE/DO AT THE COMMUNITY CENTER?



COMMON INTERESTS & POTENTIAL CONSIDERATIONS

Under 18 year olds	18 - 54 year olds	55+ year olds	Businesses & Community Organizations
<ul style="list-style-type: none"> Multipurpose courts (for athletics, free/open play, obstacle courses) Quiet space (library, reading, tutoring, relaxation) Soccer field Multipurpose rooms for learning, recreation, meeting (art, music, games) Swimming pool Gym (free play) Game Room/Arcade Café Food Court Hangout area <p>Others:</p> <ul style="list-style-type: none"> Playground Garden Counseling/ Mental Health Resource Center 	<ul style="list-style-type: none"> Fitness classes/ gym (including Zumba, yoga) Multipurpose rooms for learning, recreation, meeting (art, music, games) Multipurpose courts (for athletics, free/open play, obstacle courses) Swimming pool Indoor walking track Indoor play area / Kids' Zone Farmers' Market Food Truck Café Outdoor gathering space (pavilion, covered patio, front porch seating, fireplace or firepit) <p>Others:</p> <ul style="list-style-type: none"> Lounge/ Gathering area Work spaces Quiet space (library, reading, tutoring, relaxation) Events space with stage (200+) 	<ul style="list-style-type: none"> Multipurpose rooms for learning, recreation, meeting (art, music, games) Multipurpose courts (for athletics, free/open play, obstacle courses) Fitness classes/ gym (including Zumba, yoga) Farmers' Market Café Outdoor gathering space (pavilion, covered patio, front porch seating, fireplace or firepit) Multipurpose Lawn Food Truck Kitchen Indoor walking track <p>Others:</p> <ul style="list-style-type: none"> Fairs Nonprofit services/activities/ meetings 	<ul style="list-style-type: none"> Multipurpose courts (for athletics, free/open play, obstacle courses) Gym Work spaces Multipurpose rooms for learning, recreation, meeting (art, music, games) Events space with stage (200+) Commercial Kitchen Storage Daycare/ After School Care/ Summer Programming Resource navigation center Destination (integrate food, coffee, fireplace, splashpad, welcome center to highlight Park Twp) <p>Others:</p> <ul style="list-style-type: none"> Counseling/ Mental Health

QNS: WHAT WOULD YOU LIKE TO SEE/DO AT THE COMMUNITY CENTER?

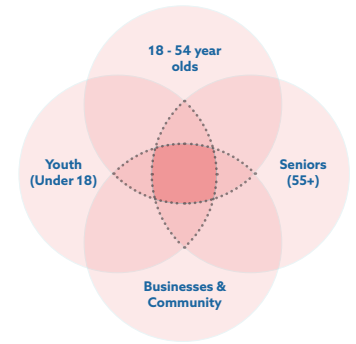


COMMON INTERESTS & POTENTIAL CONSIDERATIONS

YES! TOP 10 AMENITIES (CORE OVERLAPS)	MAYBE? OTHER CONSIDERATIONS (POSSIBILITIES)	SET ASIDE AVAILABLE/COMING AMENITIES (NOT INCLUDED)
<ul style="list-style-type: none"> • Multipurpose courts (for athletics, free/open plan, obstacle courses) • Fitness classes/ gym • Multipurpose rooms for learning, recreation, meeting (art, music, games) • Indoor play area / Kids' Zone • Quiet space (library, reading, tutoring, relaxation) • Café • Lounge/ Gathering area • Outdoor gathering space (pavilion, covered patio, front porch seating, fireplace or firepit) • Events space for 200+ to 400+ (theater/concert style) <p>Other supportive essentials:</p> <ul style="list-style-type: none"> • Kitchen • Storage 	<ul style="list-style-type: none"> • Reception • Welcome Center for Park Township (history, farming, art, former airport) • Aquarium/Indoor water feature • Art gallery/mural • Atrium/indoor gardens • Daycare • Donations/ Library of Things • Learning, Tutoring, Mentoring • Resource center for students, seniors, nonprofits, and social services • Food trucks (vs restaurants, dining) • Indoor walking track with special lane for different mobility needs • Inclusive play area • Shared workspaces • Emergency shelter 	<ul style="list-style-type: none"> • Arcade/Trampoline Park (BAM, UrbanAir) • Amphitheater for outdoor music performances (Community Park) • Farmers' Market (Waukazoo + Holland) • Ice Skating Park (Holland) • Pickleball courts (Community Park) • Playscape (Community Park) • Prairie garden (Community Park) • Roller Skating Rink (Rollxscape) • Soccer fields (Community Park) • Splash pad (Community Park) • Swimming pool (West Ottawa, HAC) • Tennis courts (Fairgrounds, Parks) • Walking trails (Community Park) • Water feature/ pond (Community Park)

QNS: HOW WOULD YOU LIKE THE COMMUNITY CENTER TO LOOK/FEEL?

Connected



LEGEND

- Overall Character
- Spatial Features, Materiality, Specifications



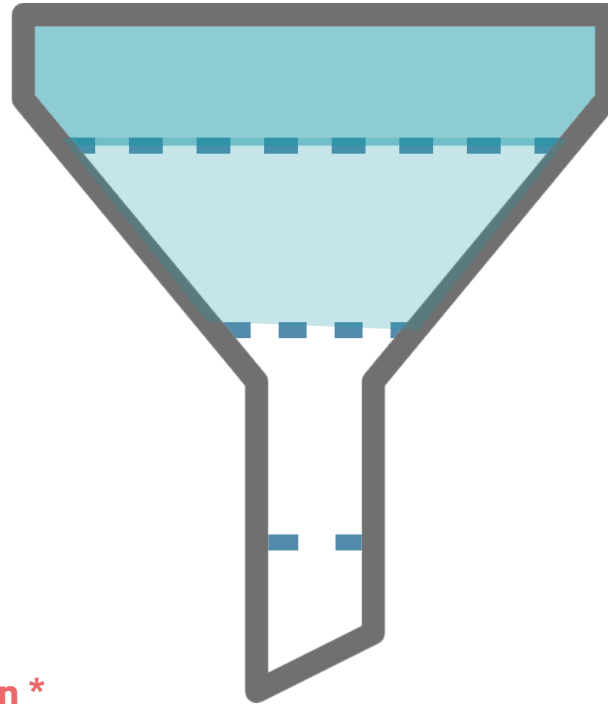
PROCESS & INTENDED OUTCOMES

Brainstorm & Ideation
MARCH 12

Charting a Vision
MAY 21

Phasing & Prioritization *
JUN - AUG

Consensus & Recommendation *
SEP 16



Request for Proposal
Based on

VISION STATEMENT
GUIDING PRINCIPLES
PREFERRED USES & PROGRAMMING
DESIGN INTENTIONS
MULTIPHASE APPROACH

VISION STATEMENT

A brief, inspiring statement suggesting a future that fits the context and circumstances at hand, while evoking a prospect that rises above the norm.

GUIDING PRINCIPLES

A set of core values to inform the programming, character, design, operations/maintenance, financing. This also serves as an evaluation criteria for the design and implementation phase.

PREFERRED USES & PROGRAMMING

A short list of potential uses, activities, and services identified by community interests and professional guidance to be incorporated in the design of the community center and its site.

DESIGN INTENTIONS (AFTER LOCATION IS DETERMINED)

A brief description of the various building- and context-related outcomes the project seeks to achieve through its design.

MULTIPHASE APPROACH

An outline of feasible, financially prudent implementation steps to support near-term priorities and longer term possibilities when additional resources are available.